



TEXAS RE

2024 ERO Implementation Plan

**Rashida Caraway
Manager, Risk Assessment**

December 7, 2023

Antitrust Admonition

Texas Reliability Entity, Inc. (Texas RE) strictly prohibits persons participating in Texas RE activities from using their participation as a forum for engaging in practices or communications that violate antitrust laws. Texas RE has approved antitrust guidelines available on its website. If you believe that antitrust laws have been violated at a Texas RE meeting, or if you have any questions about the antitrust guidelines, please contact the Texas RE General Counsel.

Notice of this meeting was posted on the Texas RE website and this meeting is being held in public. Participants should keep in mind that the listening audience may include members of the press, representatives from various governmental authorities, and industry stakeholders.



Upcoming Texas RE Events



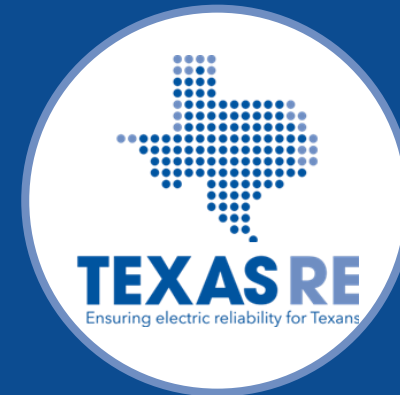
December 13, 2023

MRC, AG&F, Annual
Membership, & Board
Meetings



December 19, 2023

Asset Management, the
Foundation of a Solid
Cybersecurity Program



March 5, 2024

Women's Leadership in
Grid Reliability & Security
Conference

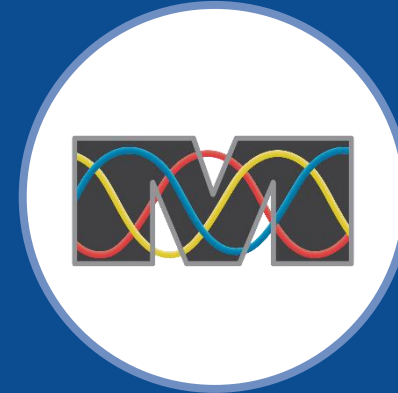


Upcoming ERO Events



December 11, 2023

Technical Talk with RF



December 12, 2023

MRO Regional Winter Assessment
Webinar



#TXRE

Joining as a participant?

Enter event code


Join an existing event

The ultimate Q&A and polling platform

Give a voice to your audience, wherever they are.

Create your own Slido event

[Watch a video](#) or [Schedule a demo](#)



CMEP Implementation Plan (CMEP IP) Purpose

- ❑ Reflects ERO and Regional Entity-specific risk elements that regions prioritize for oversight of registered entities
- ❑ Developed by NERC and the regional entities
- ❑ Four risk priorities the CMEP IP manages
 1. Changing Resource Mix
 2. Cybersecurity Vulnerabilities
 3. Resource Adequacy and Performance
 4. Critical Infrastructure Interdependencies



Risk Elements

Risk elements developed using:

- Compliance findings
- Recent event analysis
- Data analysis
- Committees
- Publications

Risk elements are considered when regions:

- Complete an Inherent Risk Assessment
- Complete a Compliance Oversight Plan
- Scope an engagement
 - Engagement team may use to focus on sampling and internal controls



Risk Elements and Align Platform



Texas RE is completing Inherent Risk Assessments and Compliance Oversight Plans in Align



Current Risk Elements listed in Align



An Entity's Compliance Oversight Plans will reflect Risk Element considerations

What's New with Risk Elements?

2023	2024
Remote Connectivity	Remote Connectivity
Supply Chain	Supply Chain
N/A	Physical Security
Incident Response	Incident Response
Stability Studies	Stability Studies
Inverter-Based Resources	Inverter-Based Resources
Facility Ratings	Facility Ratings
Cold Weather Response	Extreme Weather Response



Remote Connectivity

- ❑ Focuses on the human element of security
- ❑ How do entities manage the risk of remote connectivity and the complexity of the tasks the individuals perform?

Standard	Requirement
CIP-005-7	R2, R3
CIP-007-6	R3
CIP-012-1	R1



Supply Chain

- ❑ A growing risk and focal point
- ❑ Various publications that highlight vendors, services, and products widely used

Standard	Requirement
CIP-010-4	R1
CIP-013-2	R1, R2



Physical Security

- ❑ Incidents increasing
- ❑ Many of the attacks have been against substations or distribution infrastructure
- ❑ Potential use of drones for attacks

Standard	Requirement
CIP-014-3	R4, R5



Slido Question

Physical security is not related to cyber-security risks.

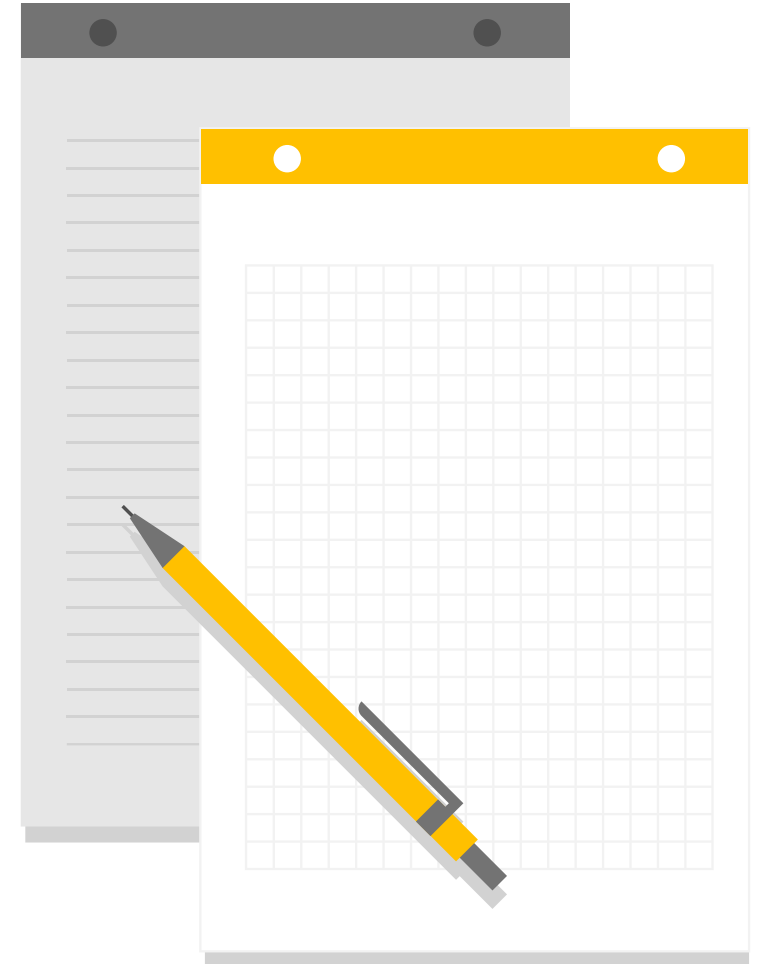
True or False?



Incident Response

- ❑ Efforts underway to develop cyber tools that should assist industry in enhancing preparation and reaction plans
- ❑ Having and implementing a Cyber Security Incident response plan is important

Standard	Requirement
CIP-008-6	R1, R2, R3



Stability Studies

- ❑ Focuses on how the changing resource mix impacts operational and transmission planning
- ❑ Reports have highlighted insufficient model quality checks

Standard	Requirement
CIP-014-3	R1
TPL-001-4 TPL-001-5.1	R4, R6



Inverter-Based Resources (IBR)

Recent events highlighted IBR risks

- Ride through capability during normal fault events
- Need to accurately model IBR characteristics
- Recent related NERC Alert

Standard	Requirement
FAC-001-4	R1, R2
FAC-002-4	R1, R2
MOD-026-1	R2
PRC-024-3	R1, R2



Facility Ratings

- ERO has released a guide on related best practices
- ERO is understanding more about controls entities have in place

Standard	Requirement
FAC-008-6	R6



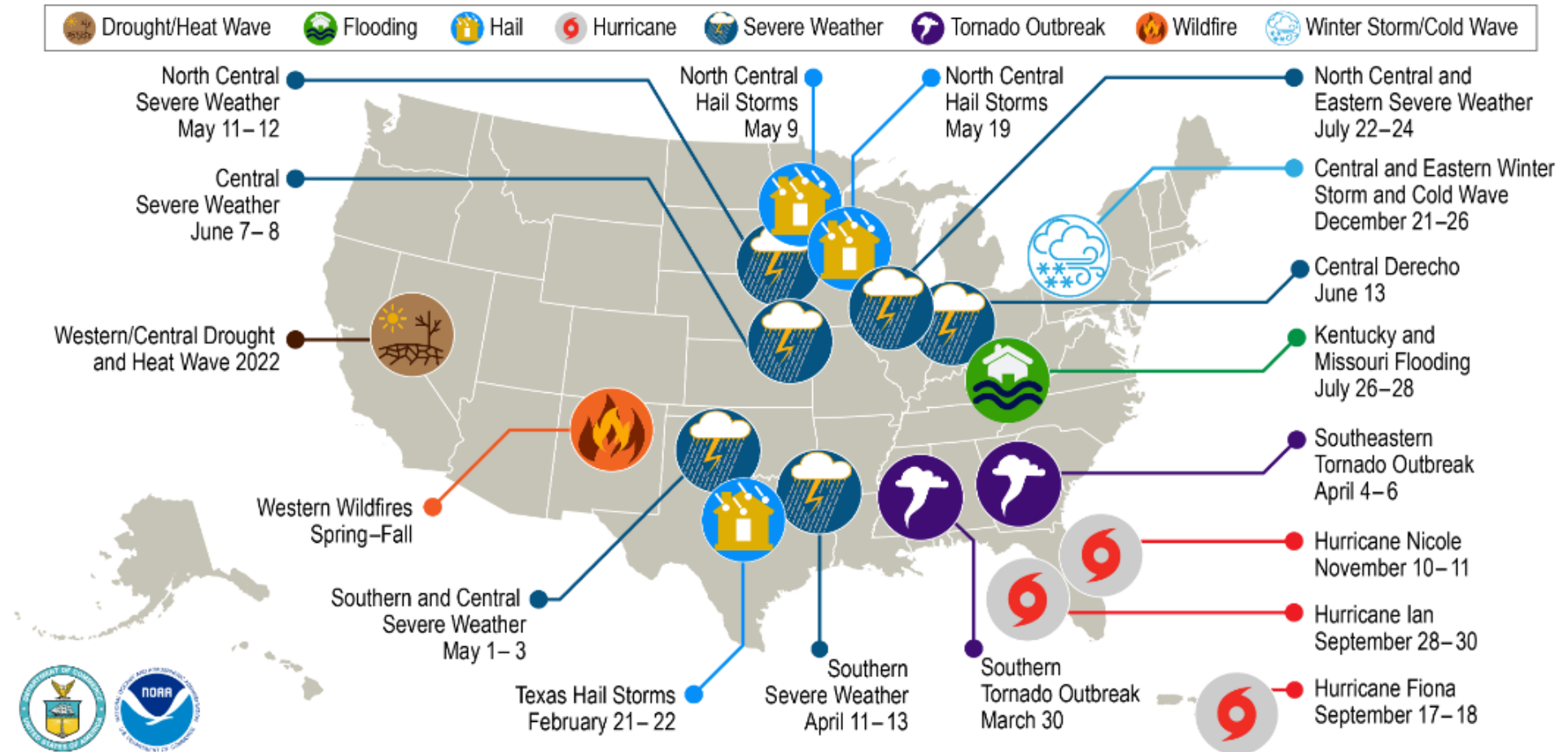
Extreme Weather Response

- Replaces Cold Weather Response Risk Element
- Extreme heat events have had impact on BPS

Standard	Requirement
EOP-011-2	R1, R2, R3, R6, R7, R8
EOP-012-1	R1, R2, R3, R4, R5, R6, R7
TPL-007-4	R1, R2, R4, R5, R7



Extreme Weather Response: 2022 U.S. Weather and Climate Disasters



This map denotes the approximate location for each of the **18 separate billion-dollar weather and climate disasters that impacted the United States in 2022.**

Source: NOAA National Centers for Environmental Information (NCEI) U.S. Billion-Dollar Weather and Climate Disasters (2023)
<https://www.ncei.noaa.gov/access/billions/>



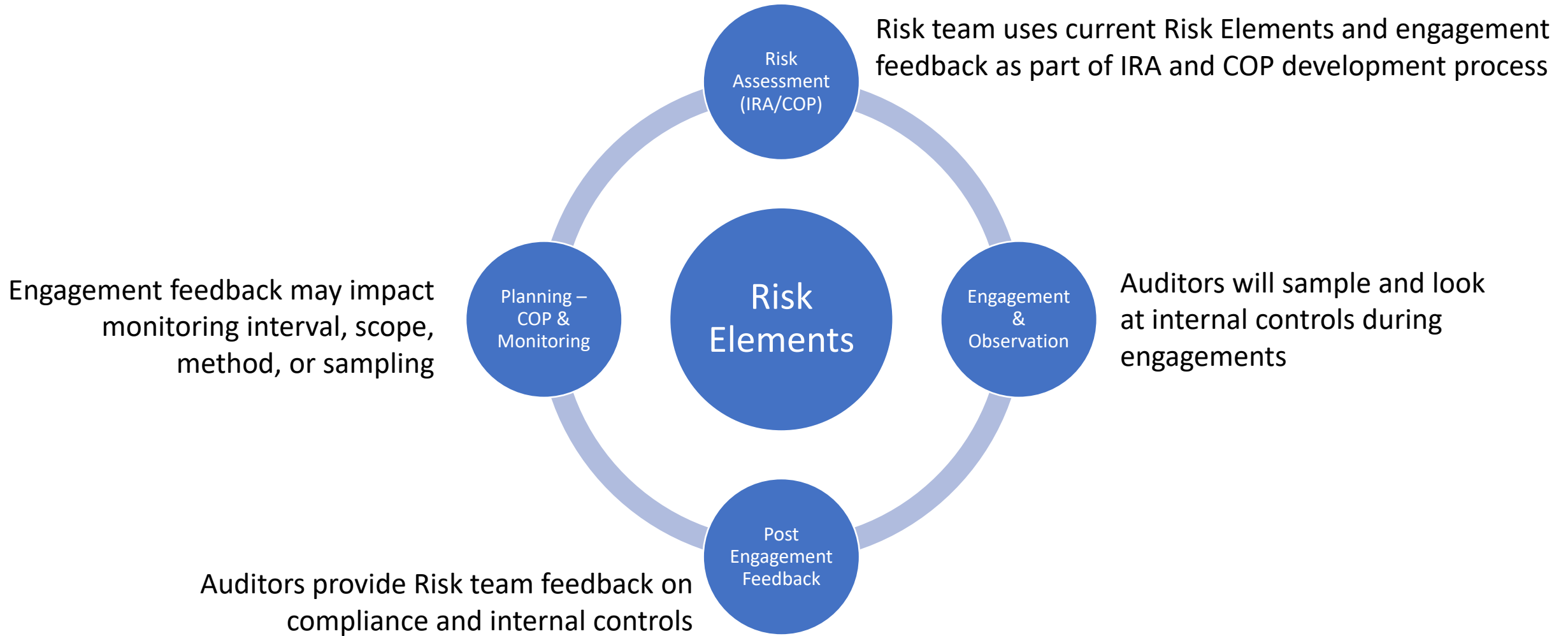
Slido Question

Which Risk Element do you think poses the most risk to your registered entity(ies)?

- Remote Connectivity*
- Supply Chain*
- Physical Security*
- Incident Response*
- Stability Studies*
- Inverter-Based Resources*
- Facility Ratings*
- Extreme Weather Response*



Tying it All Together



The background of the slide features a blurred Texas state flag on the left and a target with several darts on the right. The darts are clustered in the center of the target, suggesting a focus on a specific point.

Questions?



TEXAS RE

Ensuring electric reliability for Texans